



OPTEX

SPECIFICATION SHEET

OPTEX MODEL NUMBER
THERMO-HUNTER
BUILT-IN2

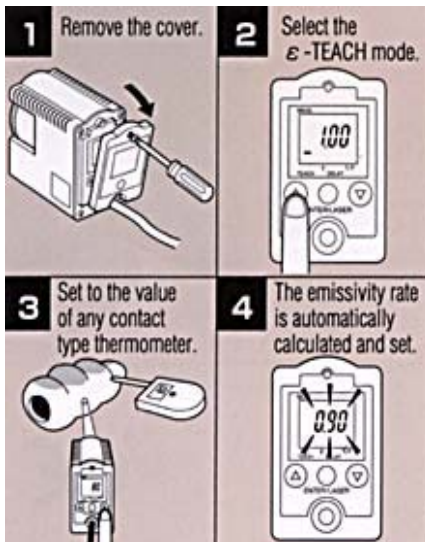
NON-CONTACT THERMOMETER



Measure Objects Quickly and Accurately From a Safe Distance

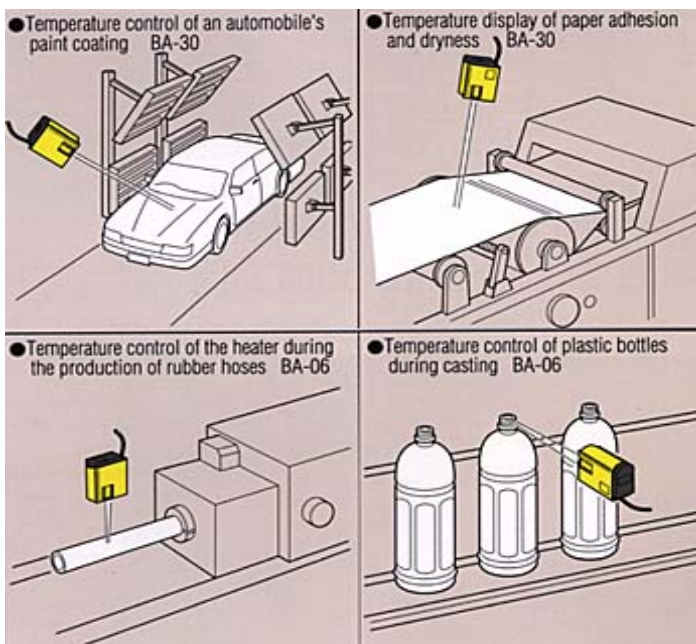
Spot measuring within a temperature range of 0 ~ 500°C at a ±1% level of precision

Optex's Built-In2 Thermo-Hunter is the first non-contact thermometer of its class to incorporate a digital display. Plus, it comes in a compact body packed with many built-in user-friendly features to help you measure objects with high precision. The E-Teach function lets you easily adjust the emissivity ratio. The Coaxial Laser Marker allows you to confirm the measuring area.



E-Teach Function For Automatic Adjustment of the Emissivity Ratio

Just input the temperature of the object you wish to measure, and the built-in E-teach function automatically calculates the emissivity ratio, which is indispensable to high-precision measuring. It quickly adapts to any changes in the procedure or in the production line. And of course, adjusting the the emissivity ratio by the conventional method is also possible.



Specifications:

Measuring Range 0 ~ 500°C
Field of View ø 6 / 200 mm ø 30 / 1000 mm
Optics Silicon Lens
Sensing Element Thermopile / 8 ~ 14 μ m
Response Time 500 ms / 90%
Measuring Accuracy ±1% of reading value or ±2°C, whichever is larger
Repeatability ±1°C of reading value
Display Resolution 1°C
Analog Output 1mV/°C or 4-20mA
Output Resolution 0.2°C
Sighting Method Coaxial Laser Marker
Emissivity Ratio Adjustment 0.10 ~ 1.20 (0.01 / 1 step)
Power Source DC12 ~ 24V ± 10% - 150mA
Ambient Temperature 0 ~ 50°C
Water Resistance IP65
Materials Ring Case: glass containing PBT, Rear Cover: PC
Weight 350g