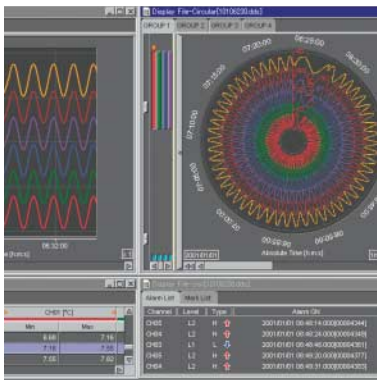


Paperless recorder

AX100

The AX100 is a Paperless recorder that features wide variation of display, versatile measurement and higher cost performance, in order to meet strict industrial requirements. The recorder embodies Yokogawa's know-how built up over the years, and is supremely reliable for continuous recording in industrial applications.



Versatile Measurement

Universal input, high-speed model: 125 msec, medium-speed model: 1 sec

Wide variation Display

5-inch High Resolution STN LCD display.
Variety of displays: trend, bar graph, digital, overview, historical, information displays.

Easy Operations

Simple operational keys allows immediate switching to desired display.
Equipment settings can easily done by interactive menu system.

Reliable Technology

Use of the Yokogawa self-developed high break down voltage solid state relay, signal conditioner chip and battery free flash memory, assuring reliability in saving measured data.
Use of 3.5-inch floppy disk or CompactFlash memory card for external memory allowing redundant data saving and analysis by PC.

PC software for easy analysis

The accommodated PC software allows quick analysis, conversion and printing.
Online equipment settings can be done through RS-422-A/485 communication interface.

AX100

Digital communication and Application Software to further expand the potential of AX100

The AX100 is a Paperless recorder that features wide variation of display, versatile measurement and higher cost performance, in order to meet strict industrial requirements. The recorder embodies Yokogawa's know-how built up over the years, and is supremely reliable for continuous recording in industrial applications.

Paperless recorder AX100

Specifications

Input Section

Measurement points : 2,4,6,10
Measurement interval : 2,4ch model: 125msec
6,10ch model: 1sec
Input Types : DCV : 20mV, 60mV, 200mV, 2V, 6V, 20V, 50V
TC : R, S, B, K, E, J, T, N, W, L, U, WRe
RTD : Pt100, JPt100
DI : voltage input/contact
DCA : shuntresistor mounting (sold separately)

Display

Display : 5-inch STN single-color LCD (320 x 240 dots)
Display types : Trend, bar graph, digital, overview, historical, information

Storage functions

Internal memory : Flash memory (measured data saving capacity: 1.2 MB)
External storage media : 3.5-inch floppy disk (2HD) CompactFlash memory card (32MB - 512MB)
File type : Display data file: saves MAX/MIN of measured data in cycles selected from 2, 10, 40, 60, 120, 480 sec
Event file: saves measured data in cycles selected from 125, 250, 500 msec (102, 104 only), 1, 2, 5, 10, 30, 60, 120, sec
File saving method : Auto saving:
Display data file
..every fixed cycle (10 min to 31 days)
Event file
..every fixed cycle (3 min to 31 days)(with free trigger) or at end of sampling (with trigger, repetition)
Manual saving : Data saved in FD or CF card when inserted

Alarm Function

No. of level : 4 levels/channel
Type of alarm : higher/lower limits, difference higher/lower limits, rate-of-change rising/falling limits
No. of outputs : 2, 4, 6 (Energized/de-energized, hold/non-hold, AND/OR, reflash)

Power Supply

Rated power supply voltage : 100 to 240 VAC (automatic switching)
Rated power supply frequency : 50/60 Hz (automatic switching)

Other Functions

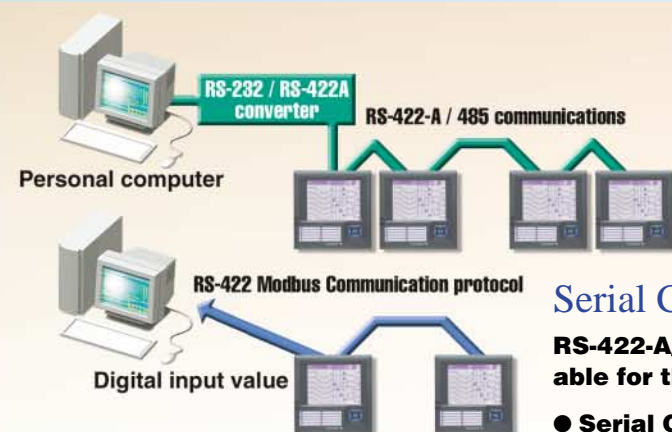
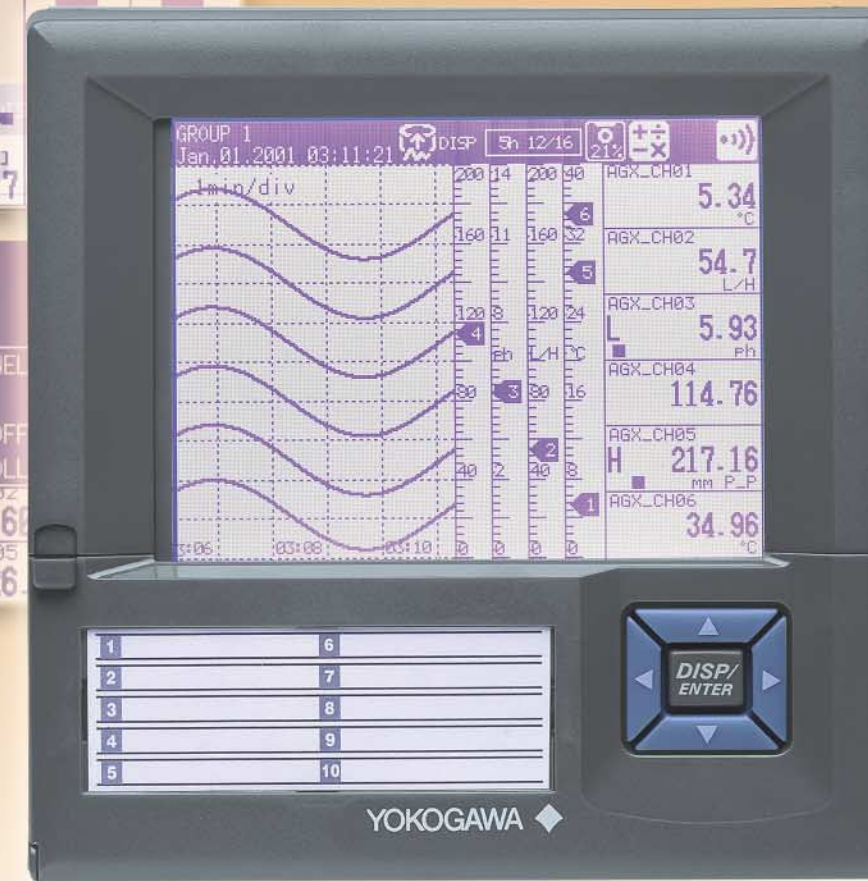
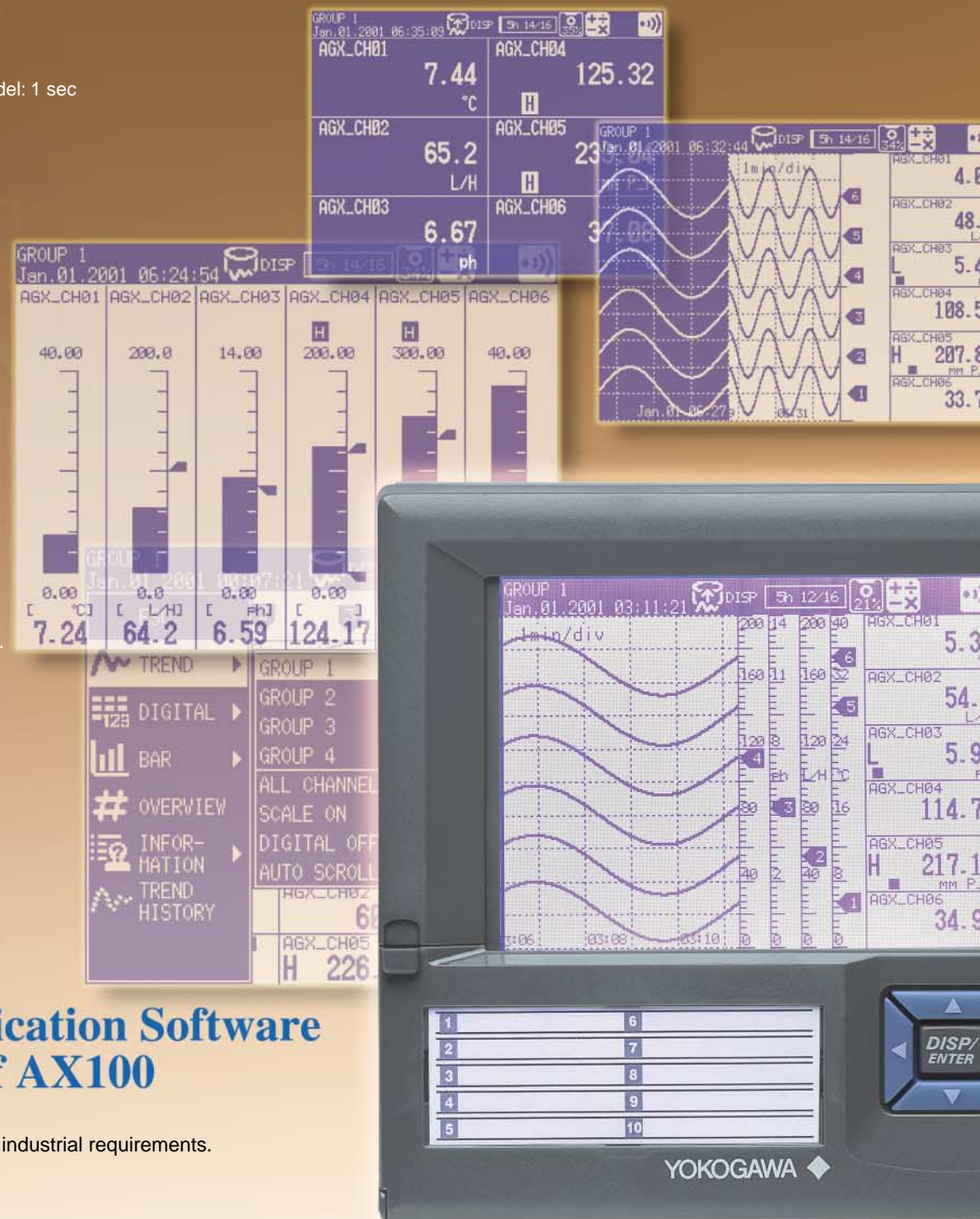
Built-in calculations : Linear scaling/inter-channel difference/square root extraction scaling
Thermocouple burnout : ON/OFF selectable, up scale/down scale selectable

Optional Function

Functions : Alarm output relay, RS-422-A, 485 communication interface, Remote control, Math, Fail memory end output relay, 24VDC transmitter power supply

Compliance with International Standards

Safety standards : CSA22.2 No.1010.1, UL3111-1 and EN61010-1
EMC standards : EN61326, EN55011 Class A Group1
EN6100-3-2, EN6100-3-3



Modbus Slave Function

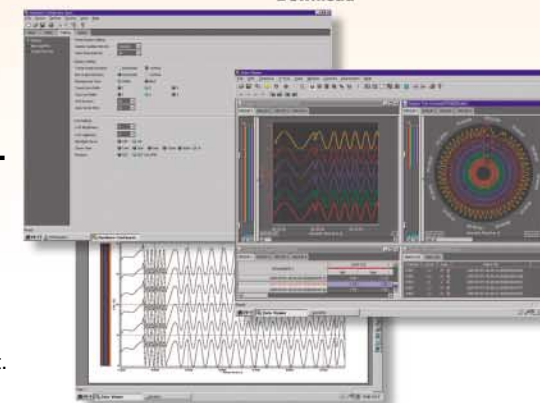
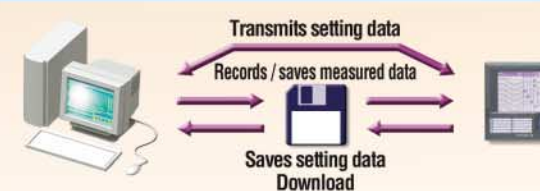
A master device can receive AX unit digital values.
In addition, data sent to the AX by the host system can be displayed and recorded on the AX unit.

Serial Communications

RS-422-A/485 interface is available for the AX unit.

Serial Communications

computer using the RS-422-A/485 interface.



DAQSTANDARD for AX software

Setup Module

The Setup module is a software that is used to receive and send the AX unit setting such as measurement channels, calculation channels, or the screen display settings.

Data Viewer

The Data Viewer module can be used to display and print data in files generated by the AX unit. Data can be displayed as trend, digital, circular displays, and table. In addition, the cursor function is incorporated to read numerical values in displayed data, or to make interval calculations for quick analysis. Data can be converted to ASCII, Excel or Lotus 1-2-3 format.

Model and Suffix Codes

Model	Code Suffix	Code Description
AX102		AX100 (2ch)
AX104		AX100 (4ch)
AX106		AX100 (6ch)
AX110		AX100 (10ch)
Extrnal Memory	-1	FDD
	-4	CF memory card
Display Language	-2	English (with English AXSTANDARD)
Option	/A1	Alarm output 2 points *1
	/A2	Alarm output 4 points *1
	/A3	Alarm output 6 points *1,*2
	/C3	RS-422-A/485 intrface (including Modbus Slave protocol)
	/F1	FAIL / memory end dtction and output
	/M1	Mathematical function
	/TPS2	24VDC transmitter power supply*3
	/R1	Remote control

*1 /A1,/A2,/A3 can not be specified together. *2 /A3,/F1 can not be specified together.
*3 /A3,/F1,/R1 can not be specified together.

Application Software

Model Code	Description	OS
AXA100-02	DAQSTANDARD for AX software	Windows 98/Me/NT4.0/2000

Standard Accessories

Parts Name	Quantity
DAQSTANDARD for AX software	1
Mounting brackets	2
Terminal screws	5
Instruction manual	1
CF memory card*1	1

*1 Provided only when the suffix cord for the memory is "-4".

Optional Accessories

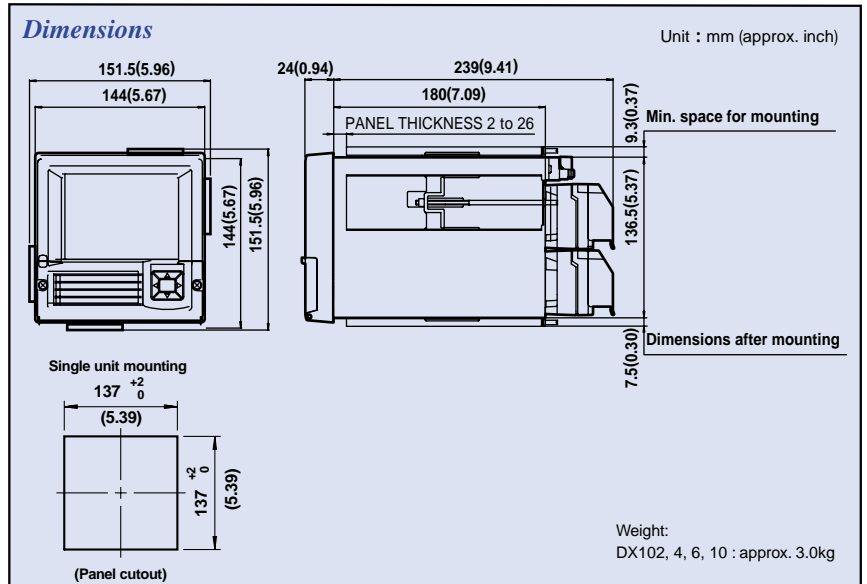
Parts Name	Parts No.	Specification
Shunt resistors (for screw input terminal)	415930	250 Ω ± 0.1%
	415931	100 Ω ± 0.1%
	415932	10 Ω ± 0.1%
3.5-inch floppy disks	415933	2HD (10 disks)
Mounting bracket	415934	-
CF memory card	415935	32MB
	415936	64MB
	415937	128MB
	415938	256MB
	415939	512MB

Input type and Measuring Ranges

Input type	Range	Measuringrange
DCV	20 mV	-20.00 to 20.00 mV
	60 mV	-60.00 to 60.00 mV
	200 mV	-200.0 to 200.0 mV
	2 V	-2.000 to 2.000 V
	6 V	-6.000 to 6.000 V
	20 V	-20.00 to 20.00 V
	50V	-50.00 to 50.00 V
TC	R *1	0.0 to 1760.0 °C 32 to 3200 °F
	S *1	0.0 to 1760.0 °C 32 to 3200 °F
	B *1	0.0 to 1820.0 °C 32 to 3308 °F
	K *1	-200.0 to 1370.0 °C -328 to 2498 °F
	E *1	-200.0 to 800.0 °C -328.0 to 1472.0 °F
	J *1	-200.0 to 1100.0 °C -328.0 to 2021.0 °F
	T *1	-200.0 to 400.0 °C -328.0 to 752.0 °F
	N *1	0.0 to 1300.0 °C 32 to 2372 °F
	WRe*6	0.0 to 2400.0 °C 0.0 to 2400.0 °F
	W *2	0.0 to 2315.0 °C 32 to 4199 °F
	L *3	-200.0 to 900.0 °C -328.0 to 1652.0 °F
	U *3	-200.0 to 400.0 °C -328.0 to 752.0 °F
	RTD *5	Pt100 *4
JPt100 *4		-200.0 to 550.0 °C -328.0 to 1022.0 °F
DI	DCV input	OFF: < 2.4 V ON :> 2.4 V
	Contact input	ON / OFF Contact on / off

*1 R, S, B, K, E, J, T, N: IEC584-1 (1995), DIN IEC584, JIS C 1602-1995
*2 W: W-5% Rd/W-26% Rd (Hoskins Mfg. Co.), ASTM E988
*3 L: Fe-CuNi, DIN43710, U: Cu-CuNi, DIN43710
*4 Pt100: JIS C 1604-1997, IEC 751-1995, DIN IEC751-1996, JPt100: JIS C 1604-1989, JIS C 1606-1989
*5 Measuring current: i = 1mA
*6 WRe 3-25

Dimensions



NOTICE

- The mounting hardware is attached on both sides or at the top and bottom (2places) for panelmounting.
- See the general specification sheet (GS 04N03A01-00E) for the panel cutout for side by side or top-and bottom mounting.

YOKOGAWA

YOKOGAWA CORPORATION OF AMERICA

2 Dart Road, Newnan, Georgia 30265, U.S.A.
Phone: (1)-770-253-7000, Fax: (1)-770-251-2088

YOKOGAWA EUROPE B.V.

Databankweg 20, 3821 AL Amersfoort, THE NETHERLANDS
Phone: (31)-33-4641806, Fax: (31)-33-4641807

YOKOGAWA ELECTRIC CORPORATION

Network Solutions Business Division
155 Takamuro-cho, Kofu-shi, Yamanashi-ken, 400-8558 Japan
Phone: (81)-55-243-0309, Fax: (81)-55-243-0397
E-mail: tm@csv.yokogawa.co.jp

Represented by :