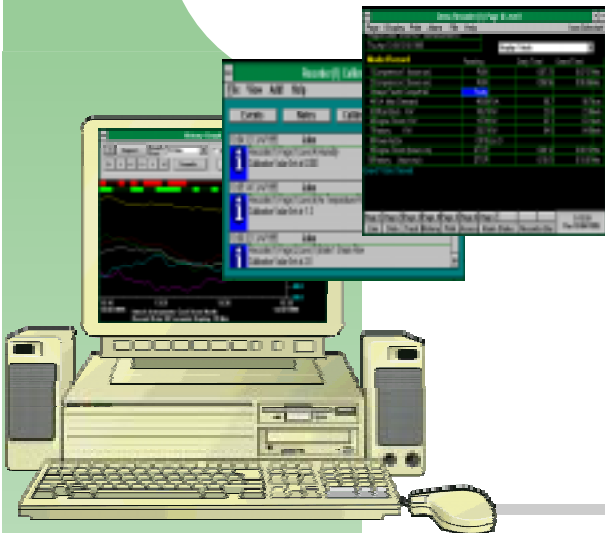


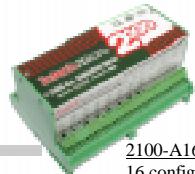
Intech Mini Packs

Chart Recorder replacement packages

- Feature Packed
- Easy to Use
- Cost Effective



Mini Pack
16



2100-A16
16 configurable inputs
3 digital inputs
2 alarm outputs



16 channel
Recorder Lite
Software Package

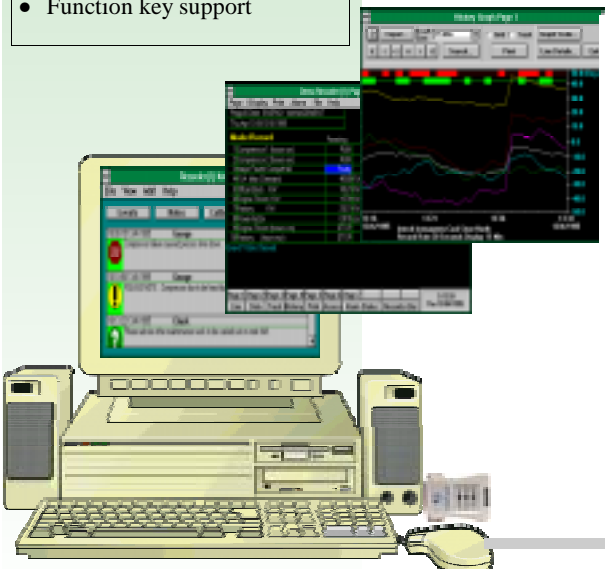
Recorder Features:

- Real-time line graphs and data screens
- Batch & continuous recording
- Mathematical blocks
- Totalising in engineering units
- Total hours run facility
- Data logs to printer
- ISO 9000 support
- Data storage to disk
- Help screens
- Historical search & retrieval
- Toolbar support
- History replay
- Function key support

Together the new 2100-A₁₆ Remote Station with the new MicroScan Recorder Lite software have the price advantage and technology edge. Mini Packs are more competitive and maintenance costs much lower.

The new Recorder Lite software includes features beyond the scope of chart recorders, including trends, realtime data, alarms and historical storage.

The new 2100A16 includes 16 individually configurable inputs channels for Thermocouple, Pt100., Pt1000, mA, mV and V, plus 3 digital inputs and 2 alarm relay outputs.



Mini Pack
32



Two pcs 2100-A16
32 configurable inputs
6 digital inputs
4 alarm outputs



32 channel
Recorder Lite
Software Package

MicroScan Recorder Lite Software

The recorder module is a vital component to any monitoring System as it represents the data acquisition component.

The visual displays can switch between the data (spreadsheet) format and the line (trend graph) format to group and display information instantaneously and historically with on screen viewing as far back as you want to go. The Recorder is ahead of its time and like by all who use it

The features include:

- Real-time line graphs
- Data analysis
- Continuous Recording
- Batch recording
- Mathematical
 - subtraction - addition
 - Multiply - divide
 - Sq root - average
 - min/max - nat. log
- Historical retrieval
- Historical search
- History replay
- Function Key Support
- Excel Support
- ISO 9000 support
- Data logs to printer
- Report generator
- User log-on and audit
- Real-time data screens
- Alarm handling and printing
- Event handling and printing
- Comment entry by operators
- Multi-level passwords
- Data storage to disk
- Total hours run facility
- DDE support
- Help screens

A brief on some of the easy to use features:

Trend Screen

Multicoloured display for analogue and digital.
Track display gives pointed values.
Adjustable graph scale and time base.
Zoom support.
High speed logging.
Automatic logs and graphs.

History Screen

Searching for historical data made easy.
Export to word processor or spreadsheet.
Easy slow playback.

Data Screen

Data screen configurable fonts.
Easy to read real time data.
Colour highlighting of alarms.
Historical replay support.

Data Screen Calibration

On-line calibration and ISO tracking support.
Configurable screen area for
Daily and grand totalisers.
Daily and grand minimum and maximum values.
24 hour average.
Alarms count and duration times.

Function Keys

Configurable screen formats.
Toolbar support.
Multilevel access.
Help screens and function key support.

Alarm Screen

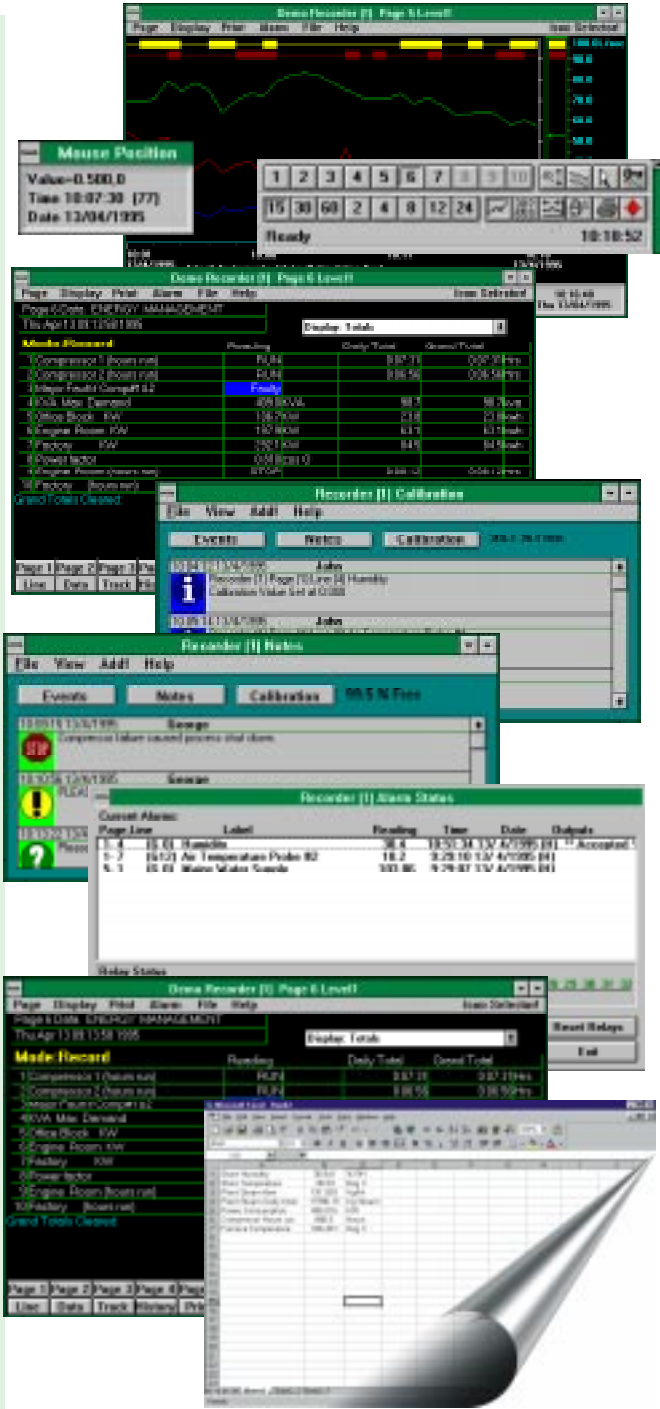
Alarm status window.
Configurable to automatically appear on alarm.
Alarms filed to disk or event log.
Full annunciation support.
Configurable automatic alarm printing.
Easy access to alarm set points after access obtained.

Printing Features

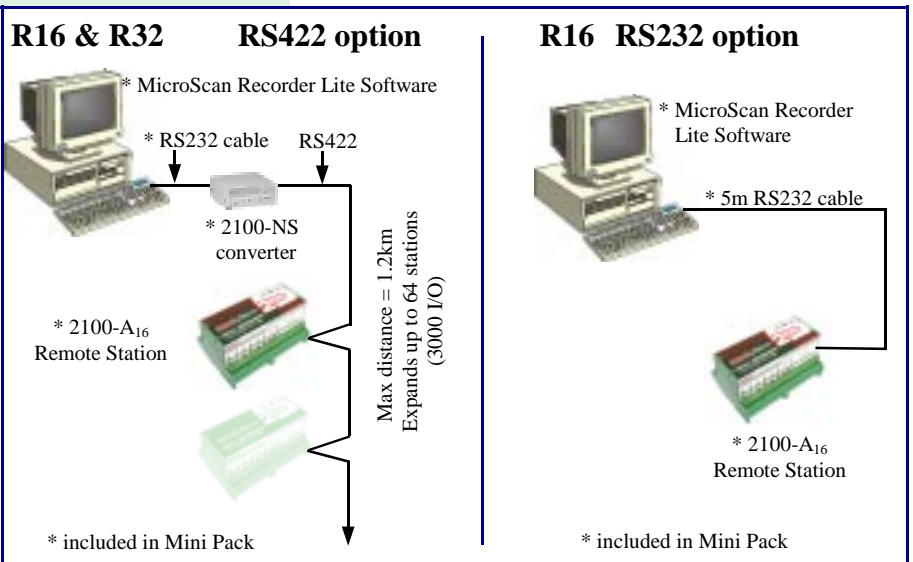
Automatic and manual log and graph printouts.
Automatic alarm logs of batch printing.
Comment printing and setup printout.

Excel Support

Easy lift off of data into Excel. Up to 25 data areas available for each channel including, input data, alarm setpoints, totalisers and so on.



Easy to hookup:



Auckland
PO Box 80173
Ph: 09 827 1930
Fx: 09 827 1931

Christchurch
PO Box 8568
Ph: 03 343 0646
Fx: 03 343 0649

Nelson
PO Box 1196
Ph: 03 546 6840
Fx: 03 548 8797